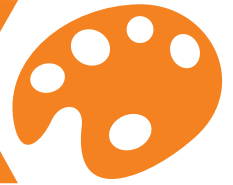


Mud Monsters

Activity Sheet



Get outdoors and create your own monster using mud or clay

You will need

- some modelling clay, pre-made mud, or mud from the river bank
- an egg box

1 Using clay or mud, sculpture your face onto tree trunks, large stones, into gaps between tree roots, or even on the ground.



Note for parents: Whilst your child is creating their monster, ask them to think about what features it may have.

Will it have:

A long and pointy nose?

Full or thin lips?

Thick and bushy eyebrows?

Large or small ears?



After they have made their basic face, ask them to think about other features:

Does their monster have hair, or a beard?

What natural materials could their eyes, ears or teeth be made out of?



2 Now, using your egg box, look for natural materials found along the river bank to add to your mud monster.

These could include tree bark, twigs, grass, moss, feathers, shells, small stones, tree seeds, sheep wool, the list is endless.

Collect small samples and put them in your egg box.



3 Now the finishing touches can be added to your mud monster - tree bark hair, feather eyebrows, a moss beard, shell ears, and tree seed eyes. Doesn't it look fantastic!



Now you've created your mud monster, why not give it a name!

Don't worry - your mud monsters will slowly disappear over time and as all the materials are natural, they won't harm the environment.



We'd love to see your mud monsters. Why not take a photo and email it to office@edenrt.org and you could see yours on our website!

Take it further

Why not construct a piece of creative writing about your mud monster or download the photo into Picassa or an app such as Instagram to re-create in different styles?