

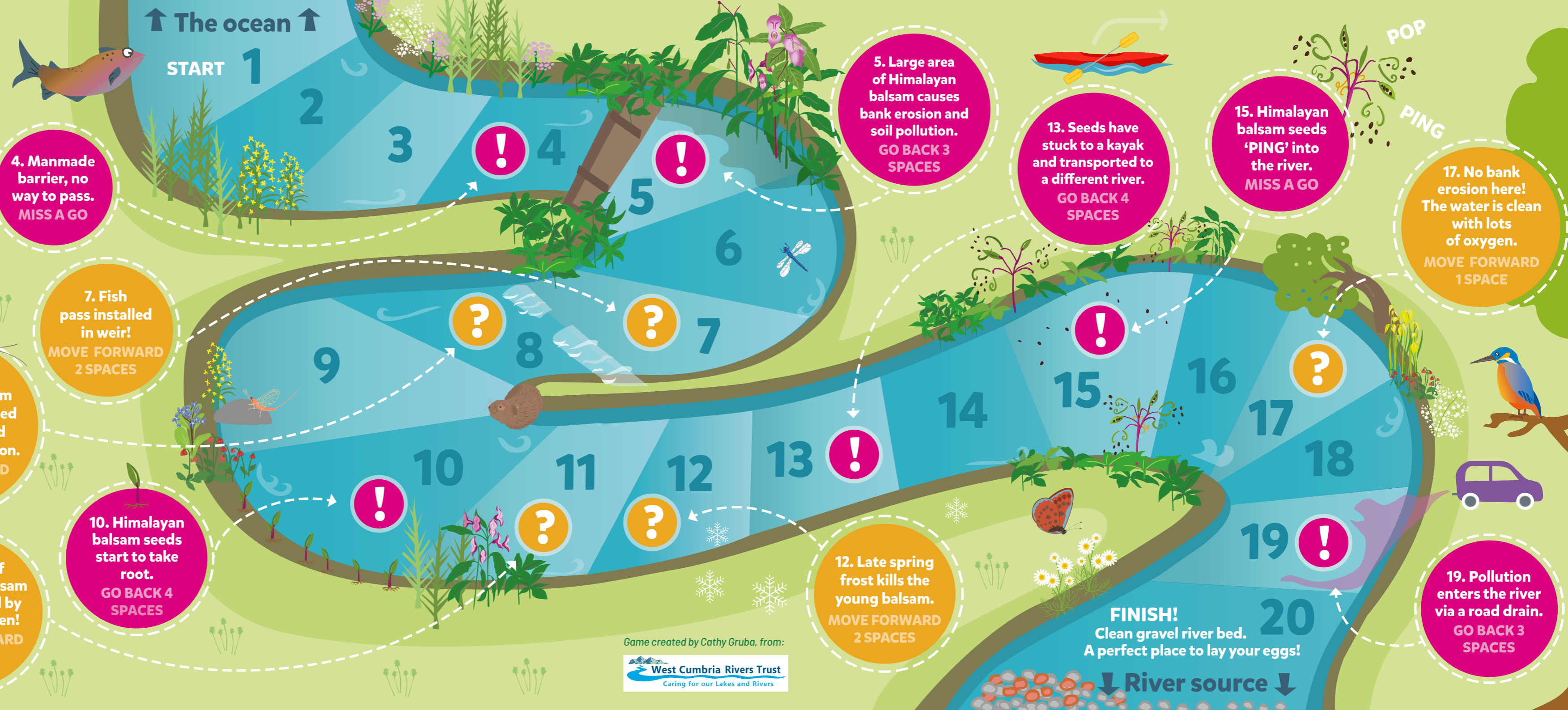
The Adventurous Salmon Game

Throw the dice and move up the river to reach your spawning ground. The first fish to get there and lay their eggs wins!

You will need: counter and dice

Will the Impatient Invader get the better of our intrepid explorer, The Adventurous Salmon, or will Balsam Bashers and river defenders save the day?

If you haven't met the Adventurous Salmon before, find out about him and his incredible journey in our illustrated book! www.edenrivertrust.org.uk/the-adventurous-salmon/



4. Manmade barrier, no way to pass. MISS A GO

7. Fish pass installed in weir! MOVE FORWARD 2 SPACES

8. Area of Himalayan balsam removed. Increased biodiversity and reduced soil erosion. MOVE FORWARD 1 SPACE

11. Patch of Himalayan balsam being bashed by school children! MOVE FORWARD 3 SPACES

10. Himalayan balsam seeds start to take root. GO BACK 4 SPACES

5. Large area of Himalayan balsam causes bank erosion and soil pollution. GO BACK 3 SPACES

13. Seeds have stuck to a kayak and transported to a different river. GO BACK 4 SPACES

15. Himalayan balsam seeds 'PING' into the river. MISS A GO

17. No bank erosion here! The water is clean with lots of oxygen. MOVE FORWARD 1 SPACE

12. Late spring frost kills the young balsam. MOVE FORWARD 2 SPACES

19. Pollution enters the river via a road drain. GO BACK 3 SPACES

FINISH!
Clean gravel river bed. A perfect place to lay your eggs!