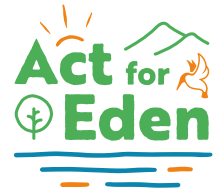
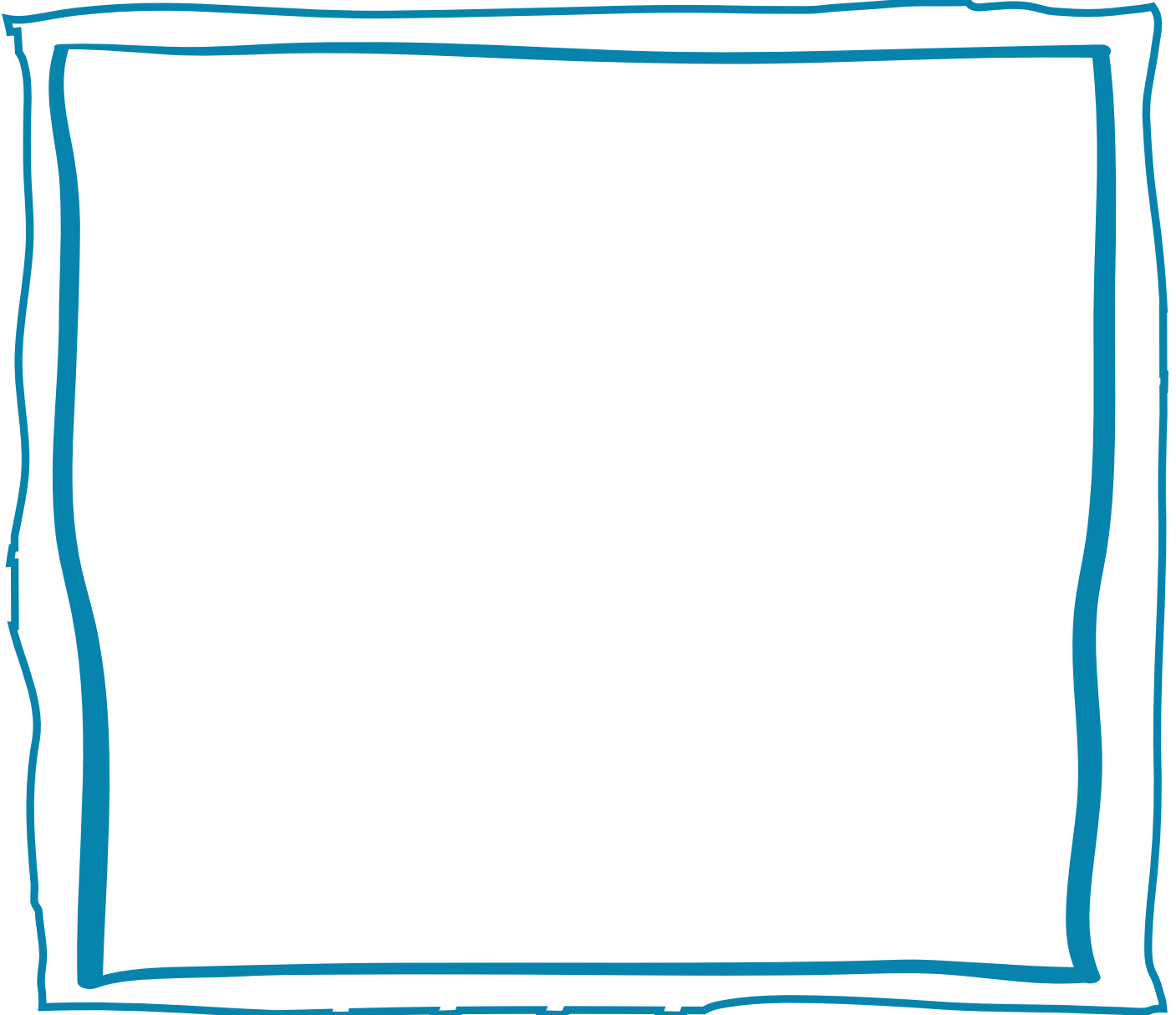
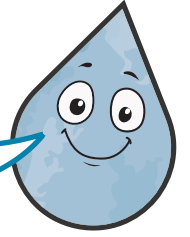


Sewer monster portrait

Activity



What does a sewer monster look like?
Draw your own yucky, gooey sewer monster, made of things that shouldn't be flushed or washed down the drain!



You can use your sewer monster portrait to help you teach your family all about the problems of fatbergs. Remember, sewer monsters (fatbergs) are created in sewer pipes when people put fats and oils down the sink. They become even more monstrous when people flush things that they shouldn't down the toilet (anything other than the 3Ps).

